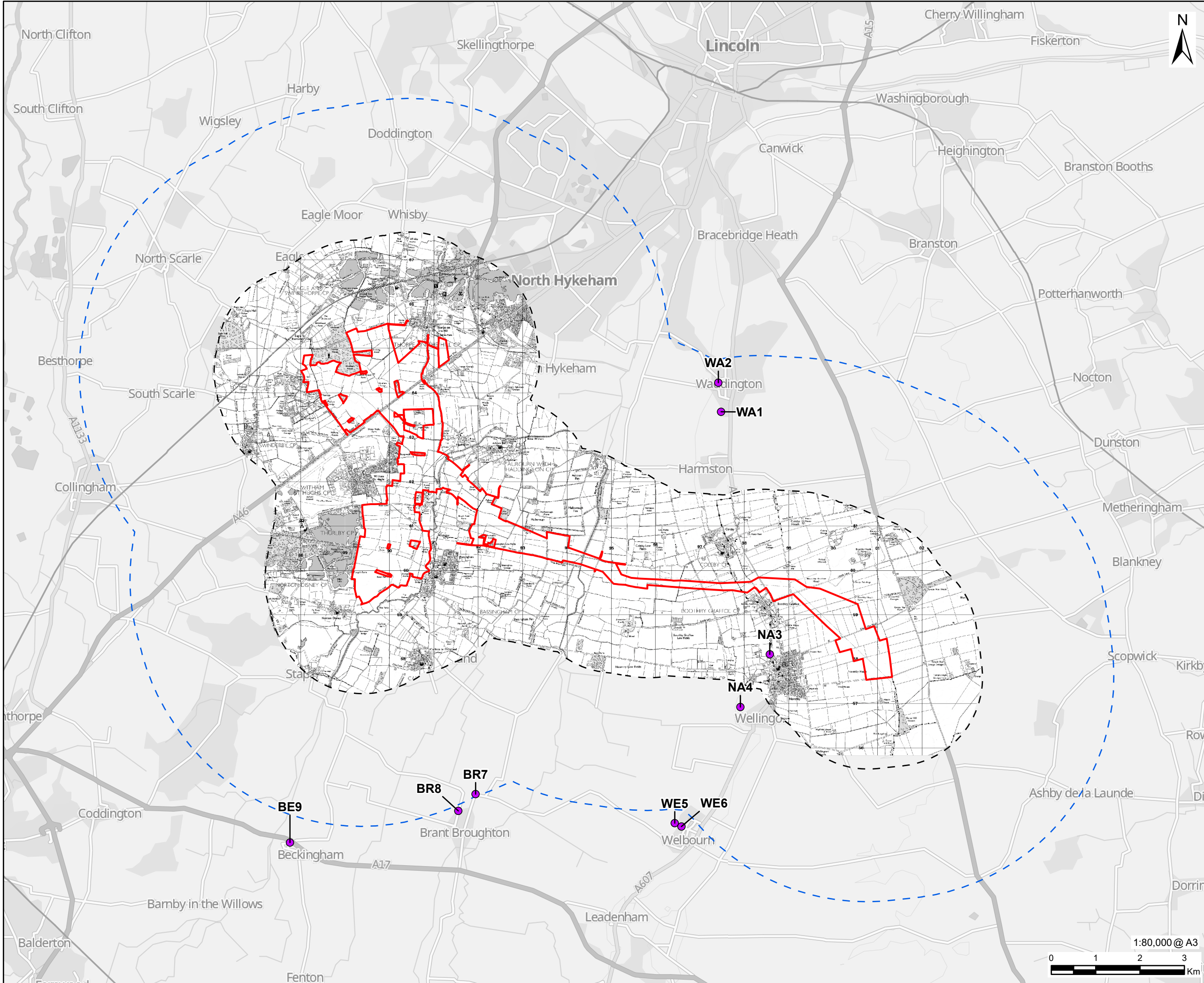


Filename: \\na.aecomnet.com\is\EA\London\UK\London\Legacy\UK\London\PPF\W001\UK\London\PPF\W001\Visual\Mapa\Environmental Statement\Chapter 10 - Landscape and Visual Amenities\ES\_Chapter10\_LandscapeAndVisual\_Figures.aprx

Project No.: 60700987 Drawn: HW Checked: AM Approved: LB Date: 2025-07-02



PROJECT

Fosse Green Energy

CLIENT

Fosse Green Energy Ltd

CONSULTANT

AECOM Limited  
Sunley House  
4 Bedford Park  
Surrey, CR0 2AP, UK  
www.aecom.com

LEGEND

- DCO Site Boundary
- 12km LVIA Study Area
- 5km Area of Search
- Scoping Viewpoint

NOTES

GB Background: Contains OS data © Crown Copyright and database right 2025  
Contains data from OS Zoomstack  
Reproduced from Ordnance Survey digital map data © Crown copyright [2024]. All rights reserved. Licence number 0100031673.©

These viewpoints have been used to inform Appendix 10-G: Landscape and Visual Impact Assessment Study Area Analysis [EN010154/APP/6.3], but have been scoped out of further assessment within the ES.

LEGISLATION

Regulation 5(2)(a) Infrastructure Planning (Applications: Prescribed Forms and Procedure) Regulations 2009.

ISSUE PURPOSE

DCO Submission

FIGURE TITLE

Scoping Viewpoint Locations

FIGURE NUMBER

Figure 10-9

REV.

01

DOCUMENT REFERENCE

EN010154/APP/6.2.